

COPY

3839

## REPRODUCTIVE BIOLOGY OF THE FEMALE DEEP-SEA RED CRAB, *GERYON QUINQUEDENS*, FROM THE CHESAPEAKE BIGHT<sup>1,2</sup>

PAUL A. HAEFNER, JR.<sup>3</sup>

### ABSTRACT

Collections of the deep-sea red crab, *Geryon quinquedens*, were made at depths from 270 to 1,300 m in the vicinity of Norfolk Canyon in the northwest Atlantic Ocean in November 1974, September 1975, and January 1976. The gross morphology and histology of ovary development are described. The size range in which relative growth of the abdomen changes is associated with maturation of the vulvae, copulation and insemination, gonad development, and egg extrusion. Females become sexually mature within the intermolt size range 65-75 mm carapace length (80-91 mm carapace width). Most intermolt females  $\geq 76$  mm carapace length show signs of copulation and insemination, and their ovaries are in intermediate to advanced stages of development. Few females  $< 75$  mm are ovigerous.

Historically the red crab, *Geryon quinquedens* Smith, has been seldom utilized commercially (Schroeder 1959; McRae 1961). Explorations have established that red crabs can readily be captured by pot or trap fishing in many regions along the eastern United States. The commercial potential of this crab has spurred investigations of the general biology and distribution (Le Loeuff et al. 1974; Haefner and Musick 1974; Wigley et al. 1975; Gray<sup>4</sup>; Dias and Machado<sup>5</sup>; Ganz and Herrmann<sup>6</sup>) as well as technological and economic aspects of harvesting and processing (Meade and Gray 1973; Holmsen and McAllister 1974).

The present study was prompted by recognition that biological data on sexual maturity are required for proper management of red crab stocks. This paper presents data on collections from Chesapeake Bight and deals with various aspects of reproductive biology of the female crab: ovary development, size composition of catch, size of

ovigerous individuals, abdomen width-carapace length relationship, development of vulvae, and evidence of copulation and insemination.

### METHODS

Red crabs were collected at depths from 270 to 1,300 m in Norfolk Canyon and vicinity (lat. 36°32'-37°10'N; long. 74°10'-74°46'W) in November 1974 (RV *James M. Gilliss* 74-04), September 1975 (RV *James M. Gilliss* 75-08), and January 1976 (RV *James M. Gilliss* 76-01). Based on the recommendations of Gray (see footnote 4), all female crabs were measured for short carapace length (CL, distance from the diastema between the rostral teeth to the posterior edge of the carapace, along the midline); width of the fifth abdominal segment was recorded for 190 crabs. Carapace length may be converted into carapace width (CW) by using the equation  $CW = 11.04 + 1.06CL$ ,  $r = 0.98$ , based on measurements of 268 female crabs.

Pleopods and vulvae were examined to determine if mating and egg extrusion had occurred. Eggs or egg remnants or their absence on pleopods, variations in the size, shape and physical condition of vulvae, and the relative size of seminal receptacles were noted. Selected samples of the spermathecal fluid were withdrawn directly from incisions in the receptacle and examined microscopically for presence of sperm or spermatozoa.

Ovaries were initially classified to relative size following the scheme used for the rock crab, *Cancer irroratus* (Haefner 1976). The scheme for

<sup>1</sup>Research cruises supported by National Science Foundation Grant GA-37561, J. A. Musick, principal investigator, and by the University of Virginia Institutional Grant Program for P. A. H. participation.

<sup>2</sup>Contribution No. 777, Virginia Institute of Marine Science, Gloucester Point, VA 23062.

<sup>3</sup>Virginia Institute of Marine Science, Gloucester Point, VA 23062.

<sup>4</sup>Gray, G. W., Jr. 1969. Investigation of the basic life history of the red crab (*Geryon quinquedens*). R.I. Div. Conserv. P.L. 88-309, Proj. 3-46-R Completion Rep., 36 p.

<sup>5</sup>Dias, C. A., and J. S. Machado. 1974. Preliminary report on the distribution and relative abundance of deep-sea red crab (*Geryon* sp.) off Angola. Sci. Pap. No. 26, 12 p. In Scientific papers presented to the second session of the International Commission for the Southeast Atlantic Fisheries (Madrid, December 1973). Publ. Mimeogr. M. E. Bioceanol. Pescas, Angola 12, 75 p.

<sup>6</sup>Ganz, A. R., and J. F. Herrmann. 1975. Investigations into the southern New England red crab fishery. R.I. Dep. Nat. Resour. Div. Fish. Wildl. Mar. Fish. Sect., 78 p.

3839

red crabs was quantified by measuring ovary volume and deriving gonad indices (Giese and Pearse 1974) for the various stages. Certain ovarian samples were selected on the basis of relative size and color and treated in the following manner. Displacement of ovaries was measured by placing the entire, excised ovary in volumetrically graduated tubes containing a known quantity of seawater. Ovary volume ( $V_o$  in milliliters) was used to compute a gonad index:  $G_i = (\text{Ovary weight}) / (\text{Total body weight}) \times 100$ , where weights in grams were calculated as follows. Ovary weight =  $1.025 V_o$ , assuming ovarian specific gravity equals that of seawater. Total body weight was derived from the following relationship based on measurements of 142 females:  $\log \text{body weight} = -3.134 + 2.8833 \log \text{length}$ ,  $r = 0.968$ .

Portions of the ovaries were then preserved in Davidson's fixative for histological processing and in Gilson's fluid (Bagenal and Braum 1971) for measurement of ova size.

Histological sections were stained in haematoxylin and eosin and mounted in Permount.<sup>7</sup> Descriptions of developmental stages were made from the resultant slides.

Samples in Gilson's fluid were shaken to release ova which were then observed with a dissecting

microscope. The diameters of 20 spherical ova from each sample were measured with a calibrated ocular micrometer. Misshapen ova were not considered. Similarly, 20 extruded eggs from 11 ovigerous crabs were removed and measured (length and width). A mean diameter was computed for each crab.

## RESULTS AND DISCUSSION

### The Ovary

The following account of the gross morphology and histology of the red crab ovary is based on examination of the gross anatomy of 255 crabs and on histological preparations from 34 crabs.

The ovary is an H-shaped organ located dorsally just beneath the carapace (Figure 1). Two horns extend anterolaterally from either side of the gastric mill and lie dorsal to the hepatopancreas. At the posterolateral borders of the gastric mill, near the origin of the posterior mandibular muscle bundles, the anterior horns are joined by a commissure. Two posterior horns, which lie ventral to the heart, extend posteriorly on either side of the intestine. The seminal receptacles arise from the midlateral border of the posterior horns and open externally through gonopores (vulvae) on thoracic sternite VI, immediately adjacent to sternite V.

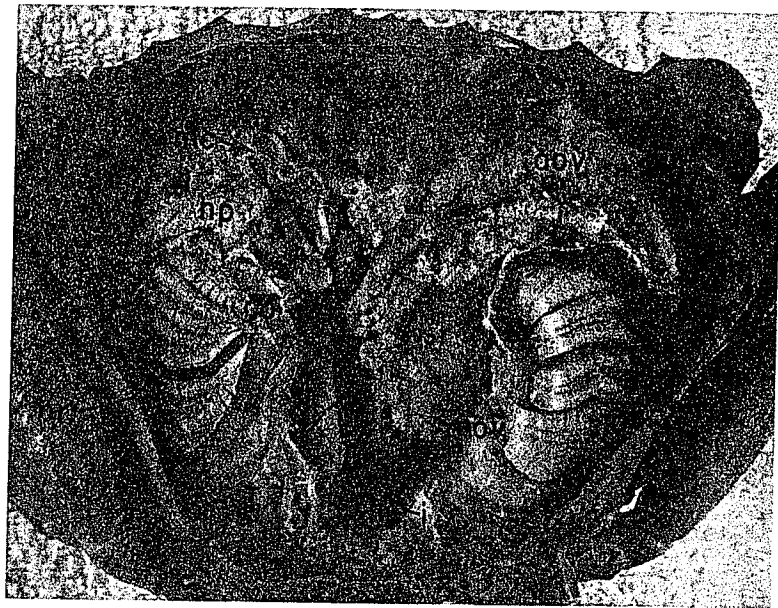


FIGURE 1.—Dorsal dissection of female *Geryon quinquedens*. Heart and medial portion of branchial chamber removed. Anterior (sov), posterior (pov) and commissure (cov) of ovary, gastric mill (g), gill (br), intestine (i), hepatopancreas (hp), seminal receptacle (sr), midgut caeca (mc).

### Very Early Development

In very early development (0.2-2.0 ml volume; horizontal diameter <math><0.2\text{ ml}</math> in volume; horizontal diameter <math><0.2\text{ ml}</math>), the ova are small (<math><0.2\text{ ml}</math> in volume; horizontal diameter <math><0.2\text{ ml}</math>), colorless. A central lumen is present. A gross morphological examination of a precursor of one is indicated in Figure 2A. This is not obvious in this stage. The ova consist of fibrous connective tissue, stratified, and blood sinusoids. The outer connective tissue wall is readily distinguishable from the inner tissue. Various cell types are present. Each cell contains one oval nucleus (7.2  $\mu\text{m}$  in diameter), larger, less numerous cells contain a smaller nucleus (7.2  $\mu\text{m}$  in diameter) and confined areas or strands. In some instances, the ova are free from the surrounding tissue. This treatment in Gilson's fluid. The ova consist of columnar cells with large nuclei (Figure 2B).

### Early Development

White, ivory, light gray, or light brown, which are small (0.2-2.0 ml volume), may exhibit histological characteristics in advance of the previous stage. The ova are filled with ova in various stages of development (Figure 3A). Connective tissue is prevalent around the margins of the ovary in numerous locations throughout the gross morphological aspect.

The germinal zone is well developed.

TABLE 1.—Descriptive stages of *Geryon* development.

Stage of ovary development	Color of ovary
Very early	Colorless, white, ivory
Early	White, ivory, light gray, light yellow
Intermediate	Ivory, white, light yellow, yellow, yellowish orange, light brown, orange
Advanced	Yellow, yellowish orange, brownish orange, reddish brown, brownish purple
Maturing	Yellowish orange, orange, brownish orange, brownish purple
Post-maturing	Ivory, yellowish orange, light brownish orange, reddish brown, reddish orange, brownish purple

ers of 20 spherical ova measured with a cali-  
r. Misshapen ova were  
; 20 extruded eggs from  
removed and measured  
ean diameter was com-

DISCUSSION

vary  
f the gross morphology  
rab ovary is based on  
atomy of 255 crabs and  
s from 34 crabs.  
l organ located dorsally  
(Figure 1). Two horns  
m either side of the  
to the hepatopancreas.  
ers of the gastric mill,  
or mandibular muscle  
rns are joined by a  
horns, which lie ven-  
teriorly on either side  
nal receptacles arise  
of the posterior horns  
h gonopores (vulvae)  
mediately adjacent to

-Dorsal dissection of  
*n quinquedens*. Heart  
portion of branchial  
oved. Anterior (aov),  
) and commissure (cov)  
tric mill (g), gill (br),  
hepatopancreas (hp),  
tacle (sr), midgut caeca

Very Early Development

In very early development (Table 1), the ovary is small (<0.2 ml in volume; horn width 0.5 mm) and colorless. A central lumen is not apparent from gross morphological examination, although the precursor of one is indicated in Figure 2. Lobation is not obvious in this stage. The bulk of the organ consists of fibrous connective tissue, apparently stratified, and blood sinuses (Figure 2A). The outer connective tissue wall of the ovary is not readily distinguishable from the inner connective tissue. Various cell types are present. Most cells contain one oval nucleus (7.2 μm long) while other larger, less numerous cells have a large round nucleus (7.2 μm in diameter). Ova diameters are small (40-172 μm) and confined to germinative areas or strands. In some instances, it is difficult to free the ova from the surrounding tissue even after treatment in Gilson's fluid. The germinal zone consists of columnar cells with (12 μm) elongate nuclei (Figure 2B).

Early Development

White, ivory, light gray, or light yellow ovaries which are small (0.2-2.0 ml volume, 2-6 mm horn width) may exhibit histological development in advance of the previous stage. Most of the organ is filled with ova in various early stages of development (Figure 3A). Connective tissue is still prevalent around the margin, penetrating the ovary in numerous locations to form small lobes which are not readily visible from a gross morphological aspect.

The germinal zone is well defined and branches

throughout the ovary. Cells in an early stage of oogenesis, recognizable by vacuolate nuclei (Figure 3B), are small (14-53 μm) compared with the more advanced ova (74-278 μm) characterized by more compact nuclei and the presence of cytoplasmic yolk granules (Figure 3C, D). They are surrounded by a single layer of follicular cells (Figure 3D) which are spindle shaped with an elongate nucleus (72 μm).

Intermediate Stage

As the ovary progresses to the intermediate stage of development, accumulating yolk, it gradually occupies more space ( $G_i = 1.4-2.7$ ) in the visceral cavity and changes color (Table 1). The ovarian architecture is little changed from that of earlier stages; connective tissue is confined to the margin of the ovary and to the interstices between the now obvious lobes. Germinative zones are present. Ova are larger (112-537 μm) than those in earlier stages.

Mature Stages

A fully mature ovary nearly obscures the hepatopancreas in dorsal view. Only a small portion of the hepatopancreas and the slightly coiled midgut caecae are visible between the ovary and branchial chamber (Figure 1). The high gonad indices (>2.7) attest to the large volume (8-32 ml) of the organ at these stages of development. The color remains variable but is generally darker than that of earlier stages as reddish and brownish hues become evident (Table 1).

The predominant histological feature in a

TABLE 1.—Descriptive stages of *Geryon quinquedens* ovary: color variation, horn size, volume, gonad index, and ova diameter.

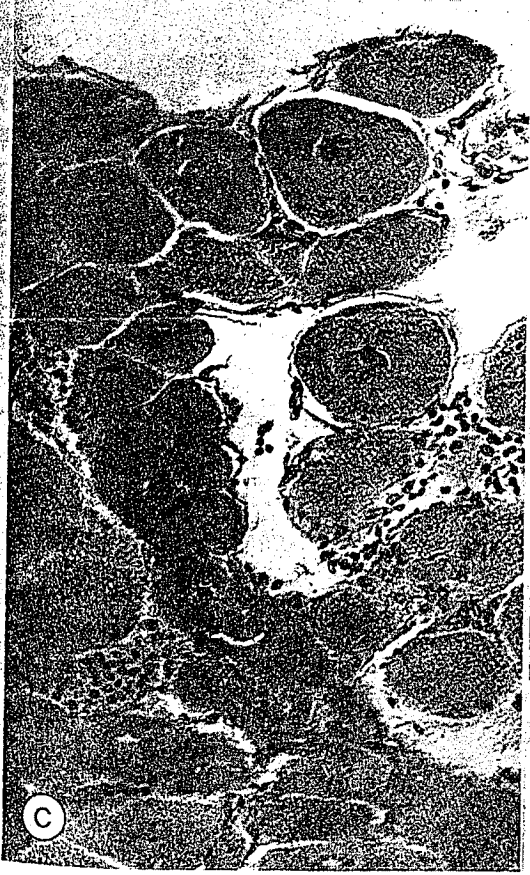
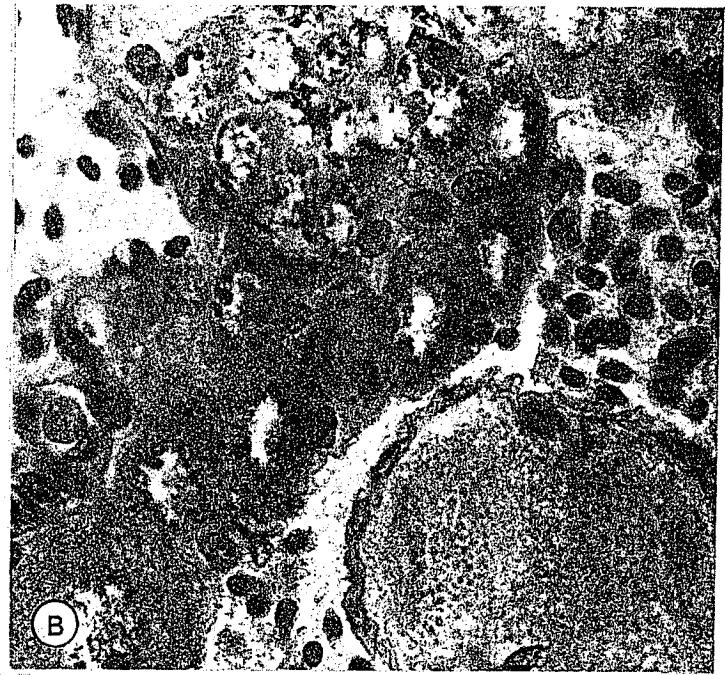
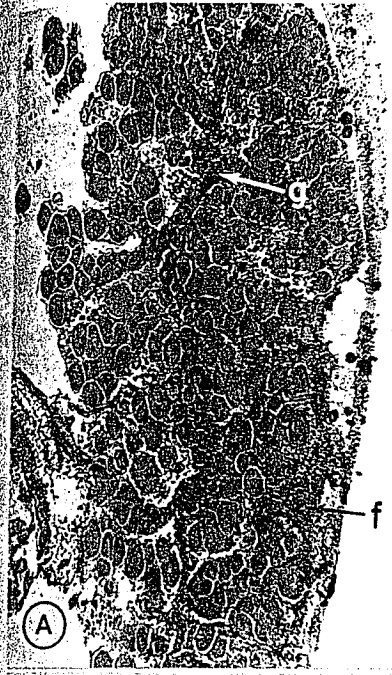
Stage of ovary development	Color of ovary	Horn width range (mm)			Ovary volume (ml)			Gonad index			Ova diameter (μm)		
		n	Ant.	Post.	n	$\bar{X}$	Range	n	$\bar{X}$	Range	n	$\bar{X}$	Range
Very early	Colorless, white, ivory	7	0.5-2.2	0.5-1.3	8	<0.2	0.1-0.2	8	0.29	0.09-0.88	3	102	49-172
Early	White, ivory, light gray, light yellow	12	2-6	2-6	15	1.1	0.2-2	15	0.75	0.19-1.75	10	168	74-278
Intermediate	Ivory, white, light yellow, yellow, yellowish orange, light brownish orange	7	8-15	6-10	12	5.2	4.5-7	12	2.05	1.45-2.73	10	289	112-537
Advanced	Yellow, yellowish orange, brownish orange, reddish brown, brownish purple	4	16-23	6-12	6	13.4	8-12	6	4.24	2.74-6.02	6	508	298-666
Mature	Yellowish orange, orange, brownish orange, brownish purple	12	20-32	10-18	10	28.9	21-32	11	8.22	6.00-11.85	9	611	484-788
Redeveloping	Ivory, yellowish orange, light brownish orange, reddish brown, reddish orange, brownish purple	6	8-20	5-7	14	9.0	2.5-21	14	2.67	1.04-7.25	16	347	148-671



FIGURE 2.—Ovary of *Geryon quinquedens* in very early development stage. A. 25 $\times$ . Fibrous connective tissue (f) predominates. Germinal strand (g) and lumen (l) precursors are present. B. Enlargement (400 $\times$ ) of germinal strand region showing columnar cells.

FIGURE 3.—Ovary of *Geryon quinquedens* in early development stage. A. 25 $\times$ . Ova in various stages of development are shown radiating from germinal zone (g). Fibrous connective tissue (f) evident. B. High magnification (400 $\times$ ) emphasizing vacuolar nucleate cells in early stages of oogenesis. C. Follicular development (125 $\times$ ) in early stage ovary. Yolk granules evident in larger ova. D. High magnification (400 $\times$ ) showing yolk granular consistency of cytoplasm in developing ova.





ent are shown radiating  
r nucleate cells in early  
D. High magnification

mature ovary, usually brownish orange to brownish purple, is the concentration of large ova (484-788  $\mu\text{m}$ ) containing large yolk granules which make sectioning difficult. The size range of these ova overlaps the mean diameter range of extruded eggs (638-817  $\mu\text{m}$ ).

The ovary is subdivided into lobes and possesses a central hollow shaft or lumen as described for *Callinectes sapidus* by Cronin (1942) and for *Portunus sanguinolentus* by Ryan (1967). An irregular matrix of compact germinal tissue, surrounded by less compact zones of large ova, borders the lumen.

### Redeveloping Ovaries

The presence of developing ova in germinal zones of ovaries suggests that oogenesis continues after ovulation. Such redevelopment is indicated by the range of ovarian developmental stages observed in crabs known to have ovulated. Ovaries from seven ovigerous crabs with egg remnants resembled the early to advanced stages described above. Mean values and ranges of horn width, ovary volume, and gonad index reflect the wide variety of stages of redevelopment (Table 1).

In ovaries from nine ovigerous crabs and seven females with egg remnants on the pleopods, germinative zones were clearly evident (Figure 4A) but the ovary was less compact than that of the mature or ripe ovary as the interstices were filled with connective tissue (Figure 4B). The ova were more variable in size within a given developmental stage. Relatively large ova (388  $\mu\text{m}$ ) can be found in an early stage ovary while unusually small ova (168  $\mu\text{m}$ ) are numerous in an advanced ovary.

### Incidence of Ovarian Development

A relationship exists between size of female and ovarian development (Figure 5). Eighty-eight percent of all crabs  $\leq 75$  mm CL (91 mm CW) possessed ovaries in early stages of development; 90% of the females  $> 75$  mm were in intermediate to advanced stages of ovarian development. Early developmental stages can occur in large crabs, particularly after recent ovulation. This is evident from the distribution of ovigerous crabs and those with egg remnants on the pleopods. Such ovaries, in redevelopment stages, can recede to early developmental stages.

### Size at Sexual Maturity

Hartnoll (1969) regarded a crab as mature "when it enters the intermolt during which it is first able to copulate successfully." It is generally accepted that in brachyurans maturity in some females cannot be determined from the condition of the gonads because development and ovulation often occur a considerable time after mating.

In the case of red crabs, several criteria were examined in an effort to define the size (age) at which females mature. These included the size distribution of ovigerous and nonovigerous females, the incidence of physical indicators of copulation, and changes in the features of the vulva and abdomen.

### Ovigerous Females

The size-frequency distribution of 755 females captured in November 1974, September 1975, and January 1976 reveals the incidence of ovigerous individuals and those with egg remnants on the pleopods (Figure 6). In November and September 27.3% and 15.7%, respectively, of females  $\geq 71$  mm CL (97 mm CW) were ovigerous; 9.0% of females  $\geq 71$  mm in September carried egg remnants. In January, 25.5% of females  $\geq 71$  mm CL were ovigerous; two of these showed some evidence of hatching. Most (94%) of the ovigerous individuals and those with egg remnants were between 71 and 113 mm CL (97-131 mm CW); only four crabs were smaller.

### Physical Evidence of Copulation

In numerous species of crabs, recent copulation by the female is indicated by the presence of a hardened mass of spermatozoa and associated secretions protruding from the vulvae (Hartnoll 1969). This so-called sperm plug does not occur in *Geryon quinqueedens*.

The exoskeletons of red crabs that have recently molted are blackened or discolored, abraded or damaged areas and are usually infested with lepadid barnacles *Trilasmis* sp. The association of lepadids and discoloration serves as an indicator of a time lapse since the last molt, although the exact length of time cannot presently be determined. It was reasoned that abrasion and damage of vulval margins due to copulation would result in similar discoloration. This was verified

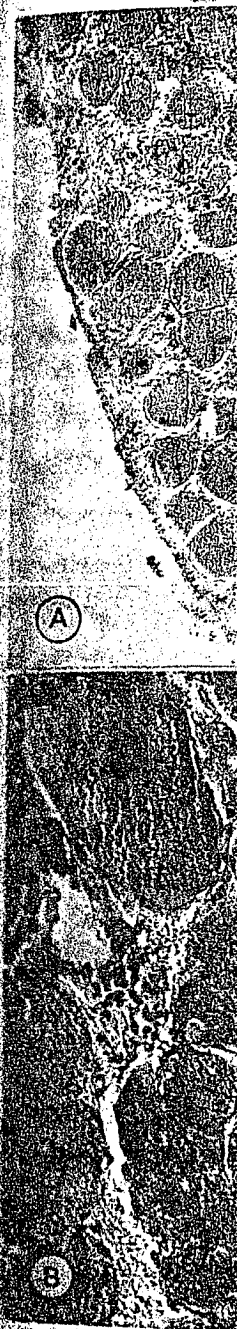


FIGURE 4.—Redeveloping ovaries. A. Developing ova are evident. B. Redeveloping ova are evident among various sizes of development.

aturity

crab as mature during which it is "y." It is generally maturity in some from the condition ment and ovulation after mating. ral criteria were the size (age) at ncluded the size nonovigerous fe- indicators of copu- res of the vulvae

les

n of 755 females ember 1975, and nce of ovigerous emnants on the and September, females  $\geq 71$  mm 9.0% of females egg remnants. In 1 mm CL were evidence of egg ous individuals between 71 and four crabs were

population

cent population e presence of a and associated vulvae (Hartnoll oes not occur in

that have not r discolored in are usually in- *clasmis* sp. The ration serves as the last molt, cannot presently at abrasion and pulation would is was verified

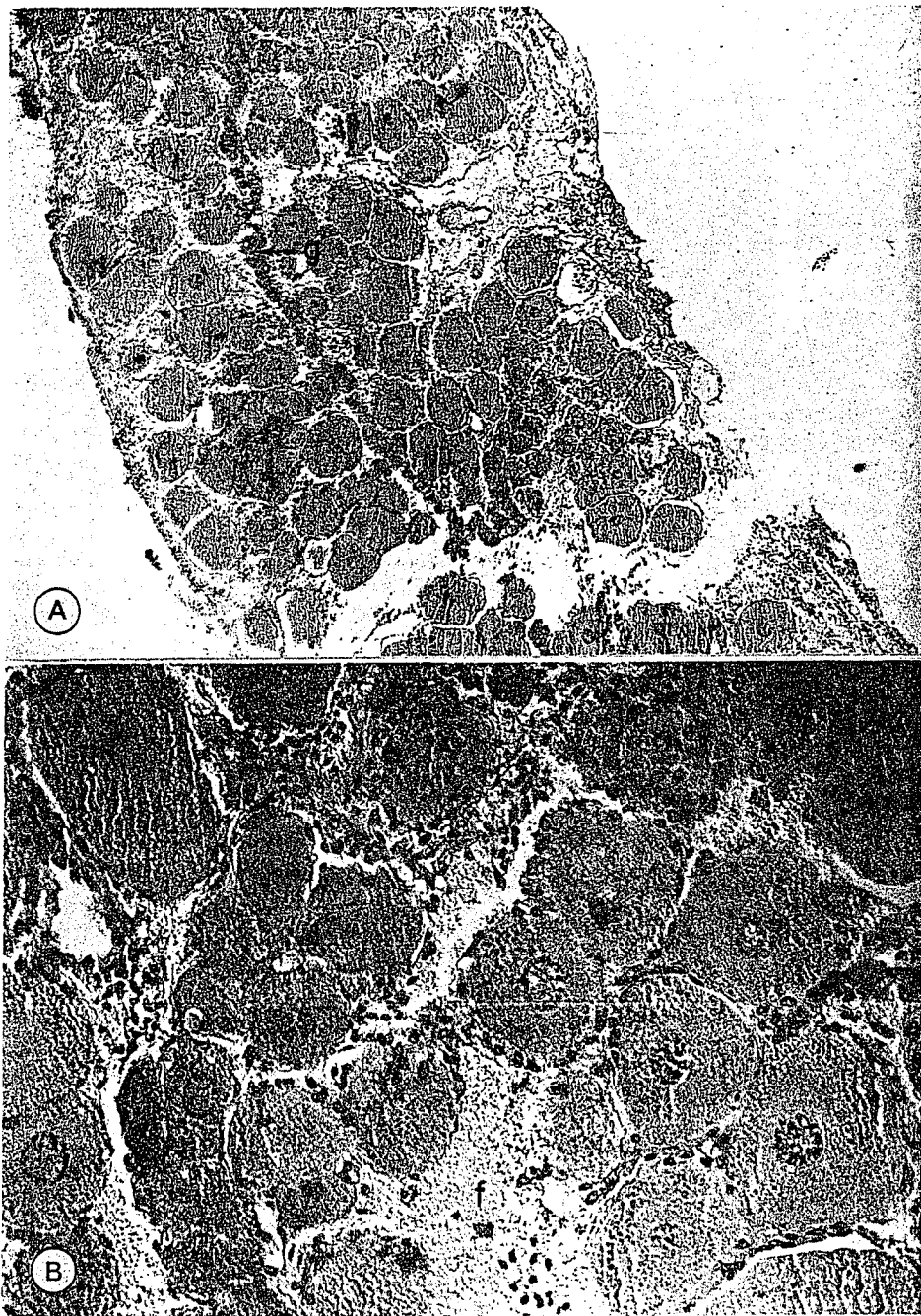


FIGURE 4.—Redevolving ovary of *Geryon quinquegens* from ovigerous crab. A. 25 $\times$ . Germinative zone (g) and developing ova are evident. B. Higher magnification (125 $\times$ ) showing prevalence of fibrous connective tissue (f) among various sizes of developing ova.

FIGURE 5.—Distribution of female *Geryon quinquedens* according to size (carapace length) and stage of ovarian development. November 1974 and September 1975 samples pooled. Black areas indicate ovigerous crabs and those with egg remnants on pleopods.

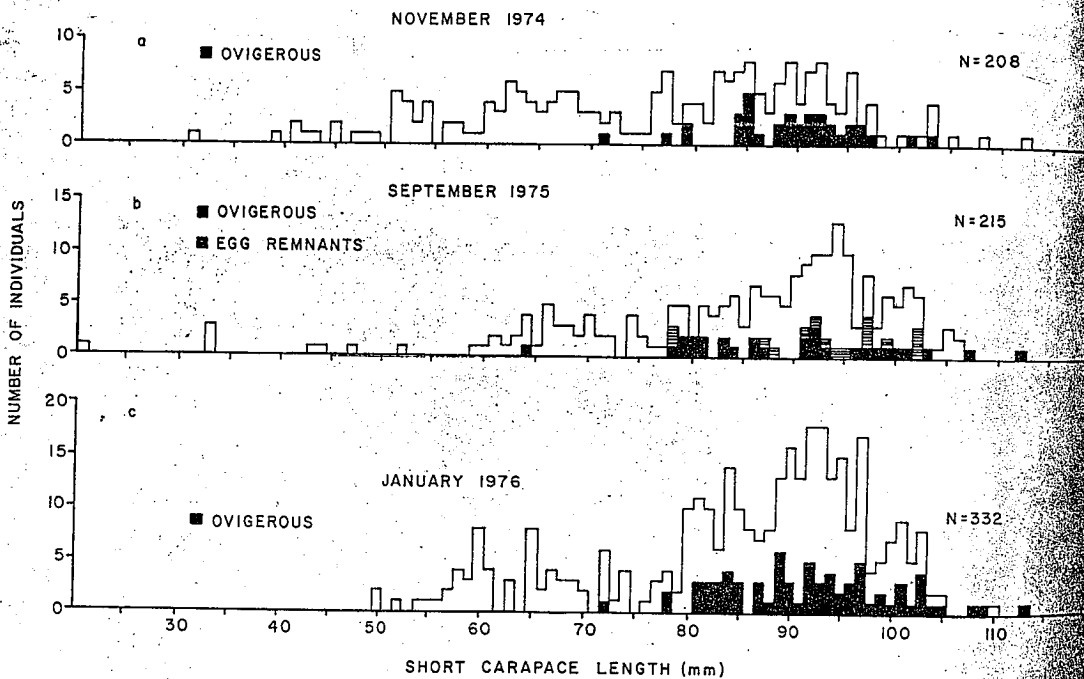
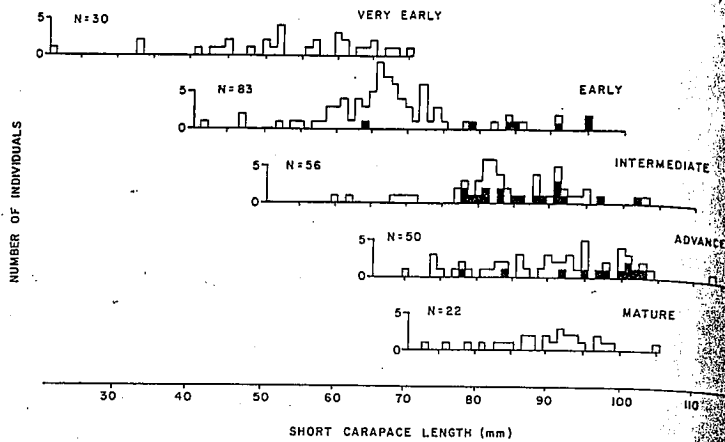


FIGURE 6.—Size-frequency distribution of female *Geryon quinquedens* captured in November 1974 (a), September 1975 (b), and January 1976 (c). Ovigerous individuals are indicated in black; those with egg remnants on pleopods by horizontal stripes.

by examining the spermathecal contents of 67 crabs with discolored vulvae (14 with extruded eggs, egg remnants, or damaged pleopods and 53 with clean, intact pleopods). Eleven (79%) of the recently ovulated females (78-103 mm CL) and 47 (89%) females with clean pleopods (45-105 mm CL) contained sperm (Figure 7). Twenty-one crabs (50-75 mm CL) with immature vulvae were similarly examined; none had sperm in the spermathecae. Another 17 crabs (50-72 mm CL)

with immature vulvae were not examined for the presence of sperm because the spermathecae were undeveloped; only the tubular vagina was present between the ovary and gonopore.

Blackened vulval margins may be used as a criterion to indicate that copulation of the female crab has occurred, if other obvious signs (egg remnants) are absent. The 89% incidence among ovigerous females supports this contention. The 79% incidence among ovulated females is



FIGURE 7.—Isolated sperm from spermathecae of female *Geryon quinquedens*. Nonmobile processes surrounding a central, refringent nucleus (Brown 1966). Interference colors.

not expected. None of these crabs had spermathecae of the type seen in most cases, only residual secretions were present, indicating that most of the deposited sperm ovulation(s) or absorption. The presence of discolored vulvae among large crabs suggested a physical criterion for copulation demonstrated for other brachyuran crabs (Butler 1960; Hartnoll 1965). Of 93.5% of the females  $\geq 75$  mm CL (N=328) were blackened (Figure 8). One crab (47 mm CL) with a mature-type vulva and an unusually small crab had blackened vulval margins were not examined. It is biologically possible for a female to mate with a male of similar size. The spermathecae were not biologically functional pleopods in the first pair, on males  $\geq 75$  mm CL. The size at which a female is biologically mature is not necessarily small.

FIGURE 8.—Size-frequency distribution of female *Geryon quinquedens* with immature gonopores (white) and with discolored gonopore margins (black). November 1974, September 1975, and January 1976 samples pooled.



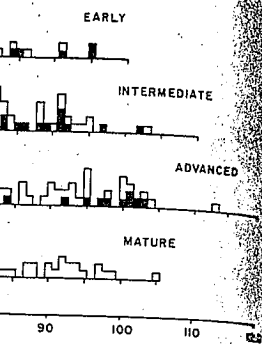
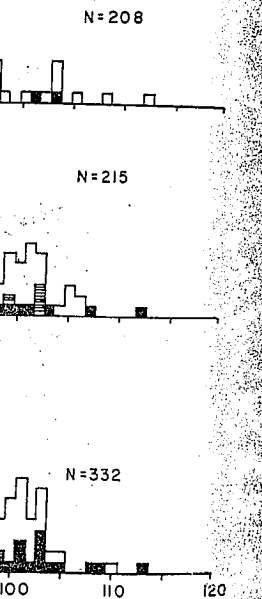


FIGURE 7.—Isolated sperm from spermatheca of 83-mm CL *Geryon quinquedens*. Nonmobile processes extend from nuclear region surrounding a central, refringent structure, most likely the acrosome (Brown 1966). Interference microscopy, 1300X.



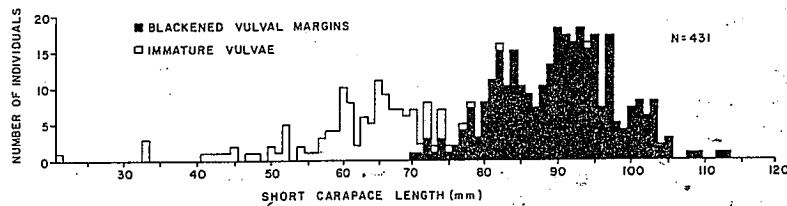
(a), September 1975 (b), and (c), November 1974, and (d) January 1976 collections pooled.

but expected. None of these crabs had swollen or turgid spermathecae of the type shown in Figure 7. In most cases, only residual quantities of seminal secretions were present in the receptacles, indicating that most of the deposit had been used in past ovulation(s) or absorbed.

The presence of discolored vulval margins among large crabs suggested that they may provide a physical criterion for copulation, similar to those demonstrated for other brachyurans (Veillet 1945; Butler 1960; Hartnoll 1969). Vulval margins of 93.5% of the females  $\geq 70$  mm CL examined ( $n = 328$ ) were blackened (Figure 8). All females  $< 70$  mm CL had vulvae with intact margins. Not included in Figure 8 are an unusually small inseminated female (47 mm CL) and the ovigerous 64-mm CL specimen included in Figure 6b.

One crab (47 mm CL) with small (1.2 mm long), but open, mature-type vulva was sperm positive. This unusually small crab had obviously mated but the vulval margins were not blackened. It is physically possible for a female this small to mate with a male of similar size. I have observed morphologically functional pleopods, with penis inserted in the first pair, on male crabs as small as 38 mm CL. The size at which males become physiologically mature is not known, but it must be relatively small.

FIGURE 8.—Size-frequency distribution of female *Geryon quinquedens* with immature gonopores (white) and with discolored gonopore margins (black). November 1974, September 1975, and January 1976 collections pooled.



### Change in Vulvae

Although variable in form, vulvae of *G. quinquedens* undergo a recognizable growth and development pattern which parallels growth in body size and ovarian development. Six types are recognized (Figure 9). The first form vulvae (a) are slitlike and tightly closed. The observed size range appears to be related to crab length (Table 2). Form (b) vulvae are recurved, closed, and slightly larger than the longest form (a) vulvae. Forms (c) and (d), irregularly shaped and partially open, range from a size comparable to the largest vulvae of type (a) to that of type (e). Unusually large (d) vulvae (2.6 mm) were observed in a 78-mm CL crab. Form (e) vulvae are oval, gaping, and appear to immediately precede the mature vulva. Form (f) is the enlarged (2.4-3.9 mm), gaping, and usually blackened vulvae of the larger, mated crabs.

TABLE 2.—Incidence of vulval type and size range in relation to carapace length of female *Geryon quinquedens*.

Type	n	Carapace length (mm)	Vulval length range (mm)
a	4	20-33	4 0.2-0.3
	10	57-66	10 0.6-0.9
b	5	56-60	0 no data
	15	61-74	8 0.7-1.2
c	9	50-60	5 0.5-0.8
	17	61-74	13 0.8-1.5
d	8	61-72	6 0.7-1.3
	1	78	1 2.6
e	3	47-60	3 0.6-1.2
	9	61-72	7 0.8-1.2
f	1	45	1 3.0
	51	70-103	12 2.4-3.9

### Change in Abdomen Width

The abdomen width (Y) to carapace length (X) relationship is allometric and is transformed to a straight line by the equation:

$$\log Y = -0.875 + 1.321 \log X, n = 251; r = 0.990$$

The relationship changes in the 60- to 75-mm CL range (Figure 10) so linear regressions were calculated separately for crabs with mature (f) vulvae:

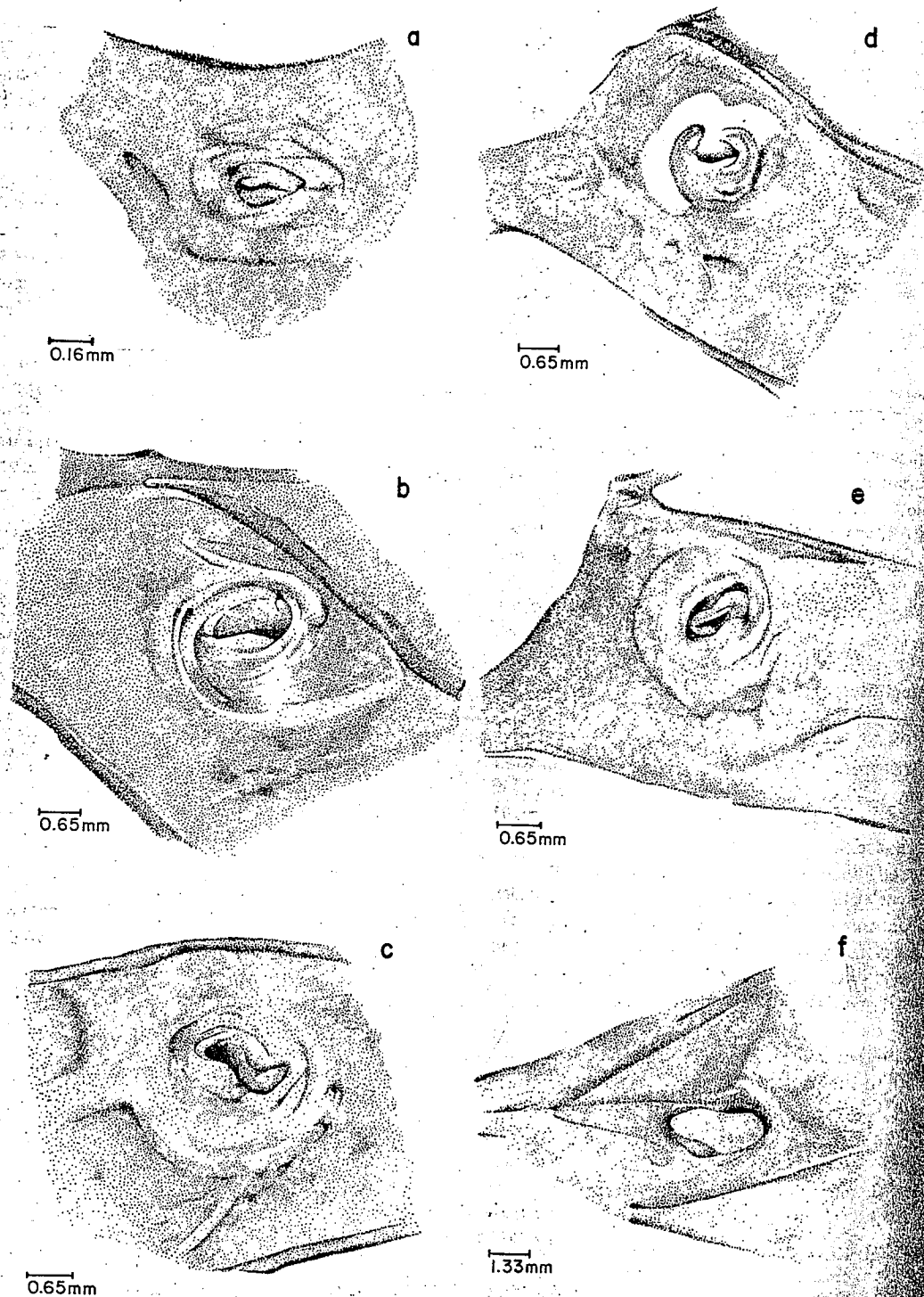


FIGURE 9.—Structural variation in vulvae of female *Geryon quinquedens*. Portions of thoracic sternites V, VI, VII illustrated. a. First form, slitlike, from 20-mm CL crab. b. Recurved, closed, 66 mm CL. c and d. Irregular shape, partially open, 74-mm and 71-mm CL crabs, respectively. e. Oval, gaping, 68 mm CL. f. Oval, enlarged, with blackened margins, 91 mm CL.

$$Y = -8.286 + 0.662X, n$$

and those with immature vulva

$$Y = -8.512 + 0.641X, n$$

The size range in which re-  
 ab abdominal segment char-  
 associated with the maturat  
 copulation and insemination,  
 and extrusion of eggs. Fema  
 mature within the intermolt  
 CL (80-91 mm CW). Most int  
 CL show signs of copula  
 and their ovaries are  
 advanced stages of developme  
 CL are ovigerous.

ACKNOWLEDG

I am indebted to the follo  
 Virginia Institute of Marine

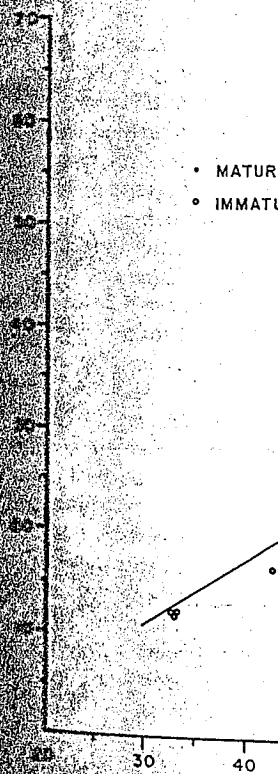


FIGURE 10.—Relationship of width of



$$Y = -8.286 + 0.662X, n = 160; r = 0.943$$

and those with immature vulvae:

$$Y = -8.512 + 0.641X, n = 91; r = 0.971.$$

The size range in which relative growth of the fifth abdominal segment changes is clearly associated with the maturation of the vulvae, copulation and insemination, gonad development, and extrusion of eggs. Females become sexually mature within the intermolt size range 65-75 mm CL (80-91 mm CW). Most intermolt females  $\geq 76$  mm CL show signs of copulation and insemination, and their ovaries are in intermediate to advanced stages of development. Few females  $< 75$  mm CL are ovigerous.

### ACKNOWLEDGMENTS

I am indebted to the following personnel at Virginia Institute of Marine Science who con-

tributed their expertise to the project: F. A. Perkins, photomicrography; Patsy Berry, micro-technique and photography; Peggy Peoples and Kay Stubblefield, art work; W. A. Van Engel, manuscript review; and those associated with the canyon cruises.

### LITERATURE CITED

BAGENAL, T. B., AND E. BRAUM.  
1971. Eggs and early life history. In W. E. Ricker (editor), *Methods for assessment of fish production in fresh water*, p. 166-198. IBP (Int. Biol. Programme) Handb. 3.

BROWN, G. G.  
1966. Ultrastructural studies of sperm morphology and sperm-egg interaction in the decapod *Callinectes sapidus*. *J. Ultrastruct. Res.* 14:425-440.

BUTLER, T. H.  
1960. Maturity and breeding of the Pacific edible crab, *Cancer magister* Dana. *J. Fish. Res. Board Can.* 17:641-646.

CRONIN, L. E.  
1942. A histological study of the development of the ovary and accessory reproductive organs of the blue crab, *Callinectes sapidus* Rathbun. M.S. Thesis, Univ. Maryland, College Park, 37 p.

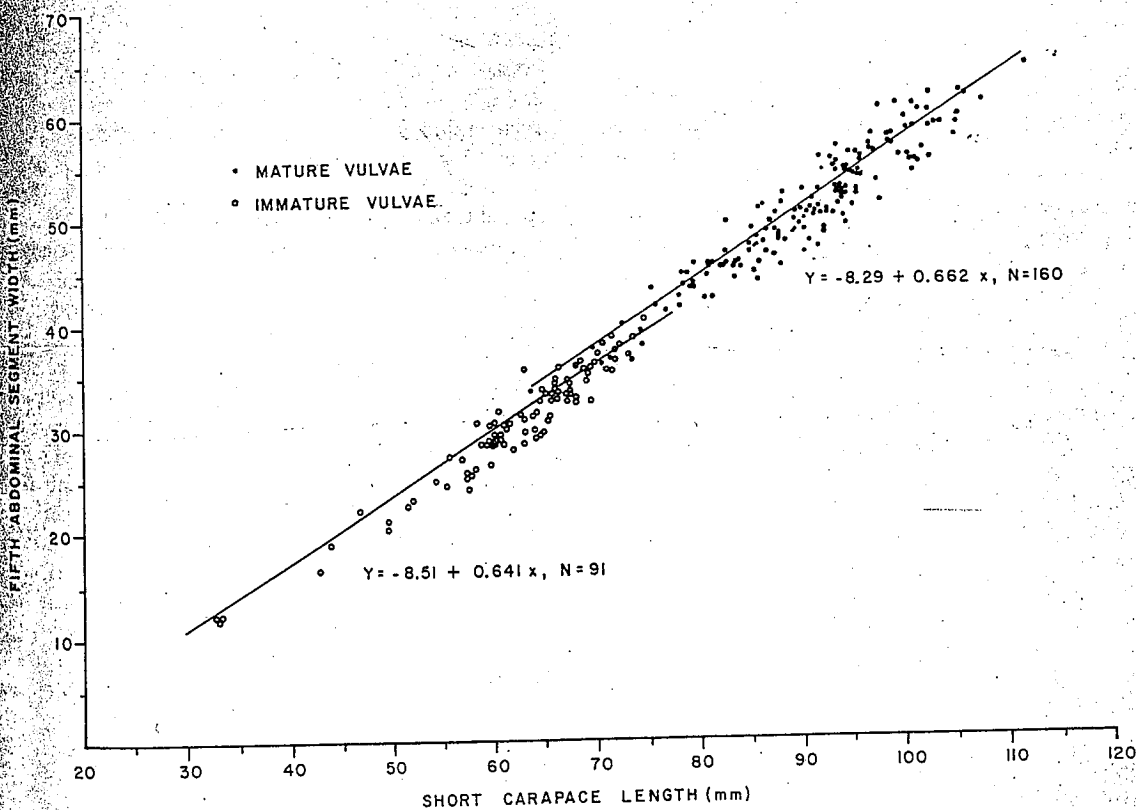


FIGURE 10.—Relationship of width of fifth abdominal segment to short carapace length for *Geryon quinquedens* with mature (dots) and immature vulvae (circles).

c sternites V, VI, VII regular shape, partially blackened margins, 90

GIESE, A. C., AND J. S. PEARSE.  
 1974. Introduction: General principles. In A. C. Giese and J. S. Pearse (editors), Reproduction of marine invertebrates. Vol. I. Acoelomate and pseudocoelomate metazoans, p. 1-49. Academic Press, N.Y.

HAEFNER, P. A., JR.  
 1976. Distribution, reproduction and molting of the rock crab, *Cancer irroratus* Say, 1917 in the mid-Atlantic Bight. J. Nat. Hist. 10:377-397.

HAEFNER, P. A., JR., AND J. A. MUSICK.  
 1974. Observations on distribution and abundance of red crabs in Norfolk Canyon and adjacent continental slope. Mar. Fish. Rev. 36(1):31-34.

HARTNOLL, R. G.  
 1969. Mating in the Brachyura. Crustaceana 16:161-181.

HOLMSEN, A. A., AND H. MCALLISTER.  
 1974. Technological and economic aspects of red crab harvesting and processing. Univ. R.I. Mar. Tech. Rep. 28, 35 p.

LE LOEUFF, P., A. INTES, AND J. C. LE GUEN.  
 1974. Note sur les premiers essais de capture du crabe

profond *Geryon quinquedens* en Côte d'Ivoire. Doc. Cent. Rech. Océanogr. Abidjan 5(1-2):73-84.

MCRAE, E. D.  
 1961. Red crab explorations off the northeastern coast of the United States. Commer. Fish. Rev. 23(5):5-10.

MEADE, T. L., AND G. W. GRAY, JR.  
 1973. The red crab. Univ. R.I. Mar. Tech. Rep. 11, 21 p.

RYAN, E. P.  
 1967. Structure and function of the reproductive system of the crab *Portunus sanguinolentus* (Herbst) (Brachyura: Portunidae). II. The female system. Mar. Biol. India Symp. Ser. 2(II):522-544.

SCHROEDER, W. C.  
 1959. The lobster, *Homarus americanus*, and the red crab, *Geryon quinquedens*, in the offshore waters of the Western Atlantic. Deep-Sea Res. 5:266-282.

VEILLET, A.  
 1945. Recherches sur le parasitisme des crabes et des galathées par les rhizocéphales et les epicarides. Inst. Oceanogr. Monaco 22:193-341.

WIGLEY, R. L., R. B. THEROUX, AND H. E. MURRAY.  
 1975. Deep-sea red crab, *Geryon quinquedens*, surveys off the northeastern United States. Mar. Fish. Rev. 37(6):

COMPARIS  
RELATION  
WATE

Monofilament and (2.2-2.6 m), and de in lower St. Andre water surface to b Fifty-two species o composed 92% of th times of day, and Catches in monofi species. Greater ca the deep-water zon Monofilament nets

The National Marine Fish began collecting a variety of deep-sea fish off-shore waters through... in 1972 for heavy-metal a laboratory of NMFS was r... collections in their respec... at the Panama Cit... relatively large r... We decided that set... effective sampling g... information on... of Mexico estuaries... factors such as tw... and time of day to... The literature did reve... the most important... in Florida. Over 34... valued at over... were caught w... on the west coast of Flo... Fisheries Service 1... in this study, are... extent in Florida est... trout, *Cynoscion ne... fishery the nets are lef... (Siebenaler 1955). ... of set gill nets in*

Fisheries Center Pa... Fisheries Service, NC... 1976... August 1976... BULLETIN: VOL. 75, NO. 1.